

PROGRIND™ TORNADO-2321

Automotive Glass Core drills/seamers (Bystronic CNC)

Precision and More



Bystronic core drill/ core dill seamers are specialized tools primarily designed for the core drilling and chamfering of holes in automotive glass on Bystronic CNC machines. Our product line includes a wide selection of drills, encompassing one-piece straight core drills and two-piece drill designs, tailored to meet the exact specifications of the automotive industry.

The lifespan of a core drill is contingent on the number of holes it can successfully create. Typically, a core drill can undergo redressing multiple times. The redressing process involves precision adjustments to the drill's depth, using a silicon carbide (SiC) wheel, until the wall thickness returns to standard levels. TORNADO drill bits, when utilized on automotive glass, consistently achieve impressive results, often exceeding 10,000 holes.

The quality of a core drill bit is also assessed by the quantity of chips produced on the glass surface, which is typically evaluated through visual inspection. This stringent quality control ensures that the final product meets the demanding requirements of the automotive industry.



About PROGRIND

PROGRIND is a company dedicated to the production and supply of top-quality abrasives materials and tools. Our operations span across Asia, where we house our cutting-edge manufacturing facilities. Our products have gained global recognition, finding applications in various industries, with a notable presence in the automotive glass processing sector. We are esteemed as one of the primary suppliers for automotive glass grinding and processing needs, both within Asia and on a global scale.

Our grinding wheels and drilling tools, designed specifically for automotive glass applications, have found widespread use in collaborations with industry giants such as Saint-Gobain, AGC, NSG, and Fuyao Group, among others. This speaks to the high quality and reliability of our products, which are trusted by key supplier in the automotive glass sector.

PROGRIND™ TORNADO-2321

Automotive Glass Core drills/seamers (Bystronic CNC)

Precision and More

Technical Data

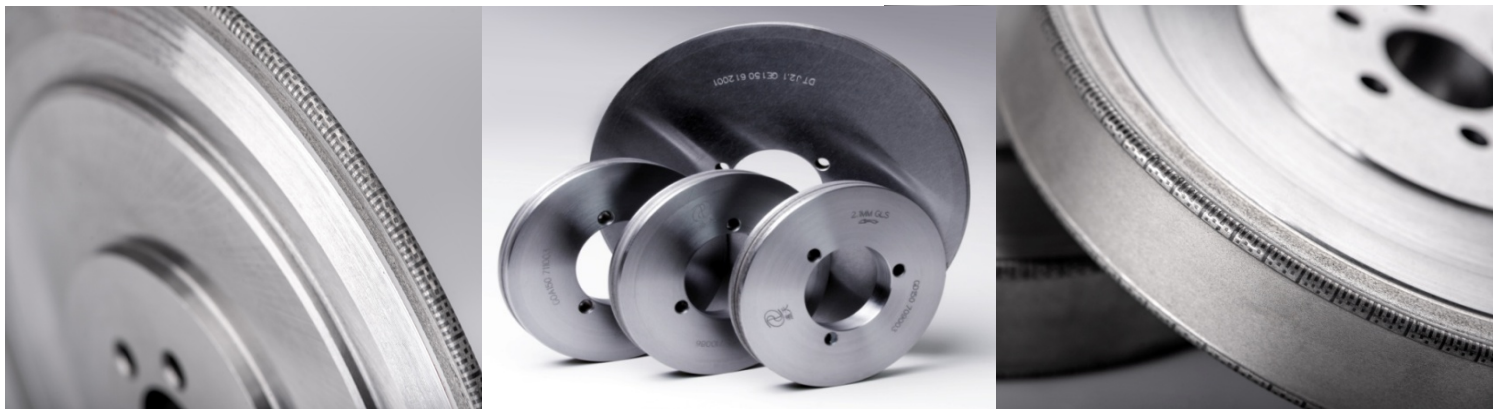
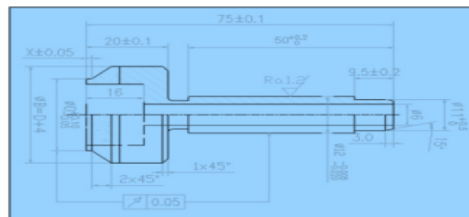
Product Features

- Offers a sharp, enduring edging performance
- Demonstrates remarkable strength and wear resistance
- Ideal for achieving clean and precise holes
- Diamond coating ensures outstanding performance and extended lifespan
- With its sharp precision, minimal debris, and high efficiency, it stands out as the premier choice for automotive glass applications.

Products Parameters

Product name	Bystronic CNC Core Drill/ Seamer
Drill diameter	Φ4.0-Φ75
Drill Depth	0.65-1.0
Glass thickness(mm)	2.1-6
Type of machine	Bystronic CNC machines

Diagram of products



ASASD/TP-AA371801-EN

Copyright 2023 PROGRIND CO., LTD, All Rights reserved. Design and specifications are subject to change without notice.

CE PROGRIND AWARDED THE CERTIFICATE OF QUALITY MANAGEMENT SYSTEM (ISO9001:2015)
DT AWARDED THE CERTIFICATE OF ENVIRONMENTAL MANAGEMENT SYSTEM (ISO14001:2004)
DT AWARDED THE CERTIFICATE OF OCCUPATIONAL HEALTH AND SAFETY MANAGEMENT SYSTEM

Company registered information:
Company Address
Company Website:

E-mail address:
Phone number:
Fax-number: